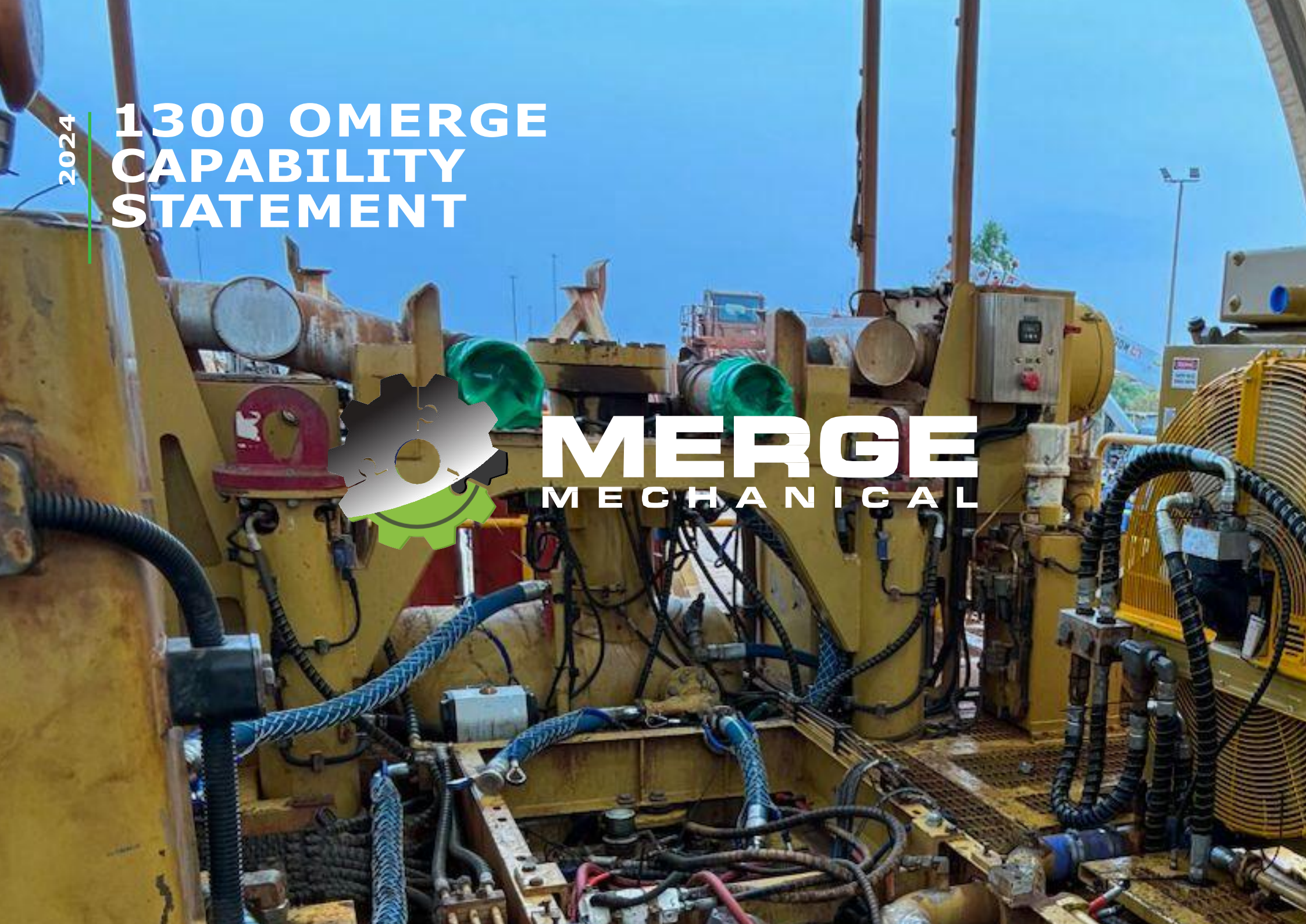


2024

1300 OMERGE CAPABILITY STATEMENT



MERGE MECHANICAL



2024

CAPABILITY STATEMENT

3 Introduction

4 Our Service Capability

5 Mobile Mechanic Services

6 Mobile Hydraulic Hose Repairs

7 Quality, Health and Safety

8 Our Vision & Promise

9 Contact



1300 OMERGE Our Company



Merge Mechanical was established in 2020 with one main vision, "How can we make a difference and strive for success in today's economy?".

Our goal is to not only provide a quality service with the utmost level of expertise and professionalism but to also make an empowering impact in Australia.

Our Mission

Our purpose as an organization is to support the resources and infrastructure industries and help build sustainable and profitable enterprise.

Merge Mechanical is currently in the process of expanding our footprint across Western Australia, with passion and willingness we will endeavor to support our community, provide knowledge to our growing team, and be adaptable to our clients requirements.

On our journey we plan to provide career pathways in traineeships and

apprenticeships to the Indigenous & Non-Indigenous community around Australia.

Merge Mechanical alongside our valued clients provide unique give back opportunities as we embrace the communities that we engage and operate in.





OUR SERVICE CAPABILITY

Delivering skilled tradesmen and premium services to keep your operations running efficiently

Automotive & HV Electrician

Our Automotive and High Voltage Electricians are trained and skilled to perform any electrical maintenance work on heavy mining equipment and highway vehicles. We are one of the specialists mechanical services companies in WA.

HD Mechanic

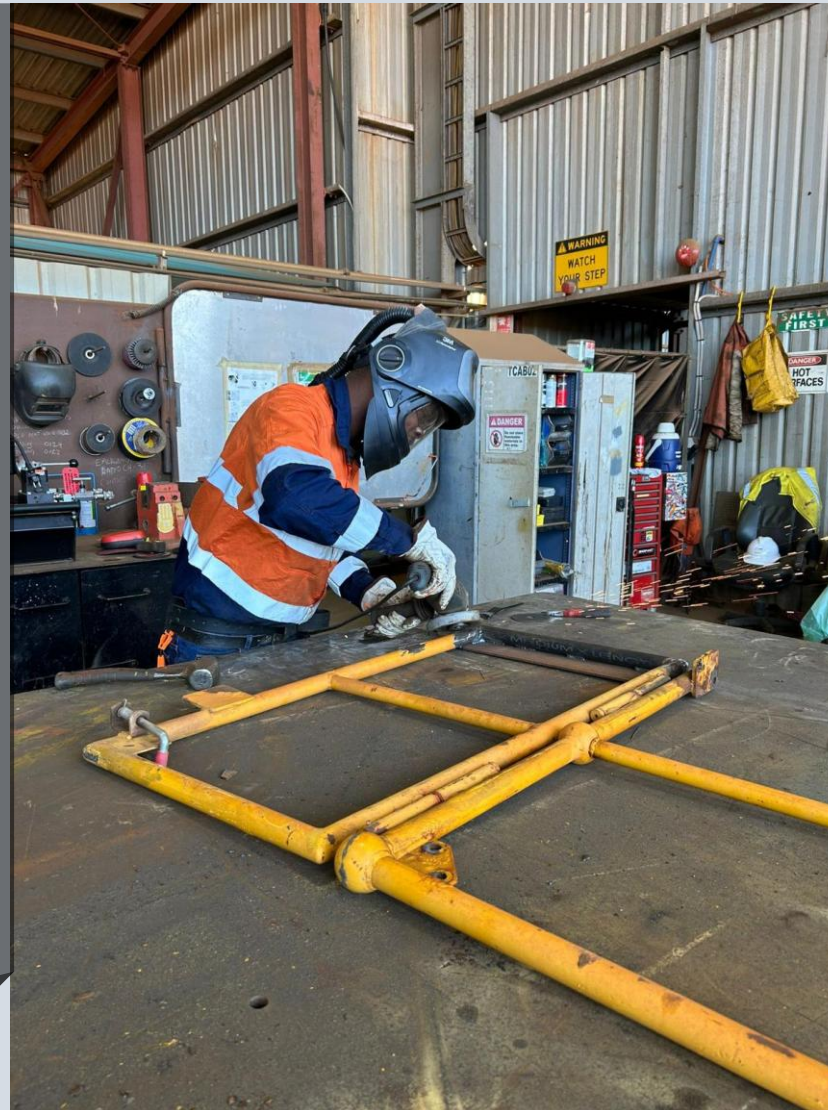
We provide experienced Heavy Duty Mechanics or Heavy Equipment Technicians for the repair, maintenance, and testing of your mobile heavy equipment. Merge Mechanical will also draw insight from their preventative maintenance knowledge and troubleshooting skills. We will always ensure minimal disruptions to productive time by scheduling routine scheduled maintenance and checks to prevent unwarranted breakdowns.

HRT Mechanic

Our team of HRT Mechanics are experienced in the provision of cutting-edge solutions for the mining and heavy road transport equipment.

Line Boring & Fabrication

We offer line boring services on-location a process which involves welding/machining to repair bores that have been worn out, oversized or irregular shaped. Once finished, the bore will have a slip fit or press fit to accept new bushing or pins.



The Merge Mechanical strategy for success includes the following process

1. Design
2. Manufacture
3. Install
4. Maintain

This includes a comprehensive maintenance service designed around a market-leading analysis.

Engaging Merge Mechanical as your maintenance service partner, guarantees that you experience minimal downtime from the services we offer. Merge Mechanical provides a proven planned schedule of maintenance work and can work with our clients to schedule/plan downtime around your production requirements. Ultimately, the result is improved asset performance, forecasted and predicted costs, plus increased confidence in the capability of your materials handling systems. Merge Mechanical offers 3 Business Sectors and within these we offer a unique point of difference to both the Mining and Civil Industries.

Our strategy is to be the preferred supplier, providing professional design, supply, process engineering, project management and quality control to the industry.

1300 OMERGE



MOBILE MECHANIC SERVICES

When your Car, Truck and Civil equipment needs a service or inspection, count on trusted experts. Our mobile mechanics bring convenience right to your doorstep

When your Car, Truck and Civil equipment needs a service or inspection, count on trusted experts. Our mobile mechanics bring convenience right to your doorstep

Our Mobile Field Service capabilities are:

Essential Services

Our Essential Car, Truck and Civil equipment services generally include oil and filter changes, brake inspections, tire rotations, battery checks, and fluid level assessments.

Routine maintenance on these components helps to prevent unexpected breakdowns.

Scheduled / Logbook services

Merge Mechanical mobile services include carrying out scheduled or logbook services for all makes and models and equipment.

This is a comprehensive service that follows the manufacturer's specifications for your vehicle, truck or civil equipment. It includes a detailed inspection and maintenance of various components to ensure every component remains in optimal condition and meets warranty requirements.

Condition Inspection

We also carry out a thorough vehicle, truck and civil equipment inspections to ensure it's roadworthy, and safe to operate. The regular inspections help catch potential problems early and keep everything running smoothly.

MERGE MOBILE MECHANICS 24/7 EXPERT ASSISTANCE



1300 OMERGE



Mechanical trades and maintenance solutions precisely crafted to align with your needs

24/7 MOBILE HYDRAULIC HOSE REPAIR SERVICES

MERGE mobile hydraulic hose repair and maintenance unit, is equipped with top-notch hydraulic crimping tools and premium hoses that empowers customers to boost productivity and profitability directly onsite. By offering focused, on-the-spot hydraulic hose repairs and maintenance, we ensure increased uptime through both scheduled maintenance and quick, reactive repairs.





QUALITY

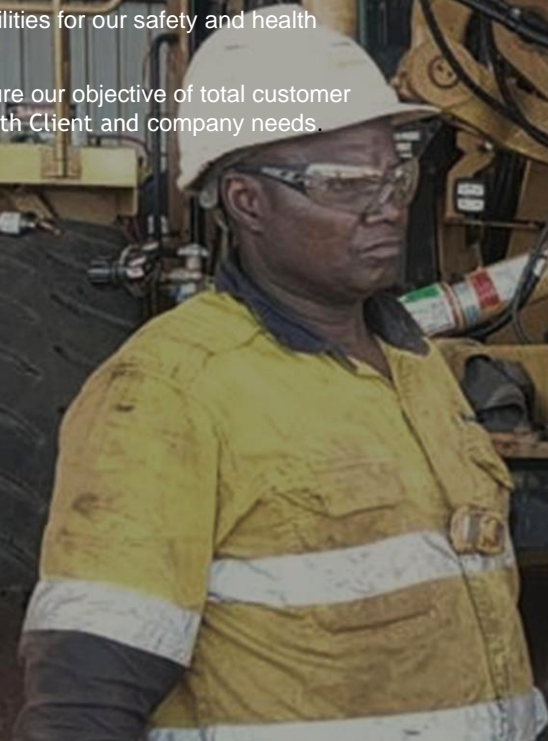
Merge Mechanical is committed to providing the highest level of product- testing services for our clients. We have established comprehensive policies and operational procedures, which comply with ISO requirements. All employees accept their share of responsibility for identifying Client needs and expectations and ensuring that our service meets or exceeds these expectations, while complying with all legal and contractual obligations.

HEALTH AND SAFETY

At Merge Mechanical, our people are our most important asset, and we are absolutely committed to their safety and health.

We engage directly with our clients and employees to ensure shared responsibilities for our safety and health objectives are met.

Our Management System is regularly reviewed by Senior Management, to ensure our objective of total customer satisfaction is met, and that the system is suitable and effective in meeting both Client and company needs.





OUR VISION FOR THE JOURNEY

The vision is a journey shared by our entire team. Each member walks a different path with the same goal in mind.

We work with clients who are aligned with our vision and core values.

We strive to be the change we want to see, by creating a healthy and empowering workplace culture and by giving back to our community.

OUR PROMISE

All work is fully guaranteed by our team, we take pride in being readily accessible and adaptable to our clients requirements. The service team provides a 24-hour, seven-day service to all call-outs and ensure that no job is too small. We understand the importance of the how an unscheduled breakdown effects our clients' operations and the impact it has on their daily running costs.

WHY CHOOSE MERGE?

We are leading the next generation and finding innovative solutions

We are committed to our clients and our community

We have the drive and passion for success

We have the technical capabilities and knowledge in our fields of expertise

We are boutique but have a diverse business background

We have tangible community upliftment and give back



1300 OMERGE



MERGE

MECHANICAL

**GET IN
TOUCH:**

Lloyd Jongwe
Managing Director

Phone: 0408 886 929
Email: lloyd@mergemechanical.com

Elie Mathews
Mobilisation Coordinator

Phone: 0477 918 200
Email: labour@mergemechanical.com